



**COMMISSIONERS COURT
COMMUNICATION**

COURT ORDER NUMBER _____

PAGE 1 OF 16

DATE: 8/5/2025

**SUBJECT: CONSIDERATION TO AUTHORIZE THE ELECTIONS ADMINISTRATOR
TO PUBLISH WRITTEN NOTIFICATION OF APPROVED CHANGES TO
VOTING PRECINCT BOUNDARIES**

***** CONSENT AGENDA *****

COMMISSIONERS COURT ACTION REQUESTED

It is requested that the Commissioners Court consider approving the voting precinct changes and authorizing the Tarrant County Elections Administrator to publish written notification of approved changes to voting precinct boundaries in a local newspaper and on the Tarrant County website.

BACKGROUND

Election precinct boundary changes are necessary to bring Tarrant County into compliance with Texas Election Code Section 42.005, which forbids territory from an election precinct from containing territory from more than one of six types of electoral territorial units. Texas Election Code Section 42.031(b)(1) permits the Commissioners Court to order a boundary change of election precincts under these circumstances. However, pursuant to Texas Election Code Section 42.035, after an election precinct boundary is changed, the Commissioners Court must publish written notice of the approved changes in a local newspaper once a week for three consecutive weeks and on the County's website for three consecutive weeks.

By approving this item, the Commissioners Court approves the voting precinct changes and authorizes the Tarrant County Elections Administrator to publish written notice of the approved changes in a local newspaper and on the County's website on behalf of the Court.

FISCAL IMPACT

The cost to post the notice in the local newspaper is approximately \$40.00.

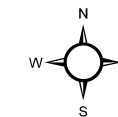
SUBMITTED BY	Elections Administration	PREPARED BY:	Troy Havard
		APPROVED BY:	Clinton Ludwig

Tarrant County Precinct Boundary Changes

You are hereby notified that the Tarrant County Commissioner's Court has adopted changes to the county's Commissioner's boundaries effective June 03, 2025. These changes were made in accordance with Election Code Sections 42.032 and 42.033.

Existing Precinct	Current (02/03/2025) Registered Voters	Recommended Action	Estimated Future Registered Voters
1388	3,105	Move to Commissioner District 3, rename to 3388. Lose northeast part and east part to Precinct 1404.	2,926
2148	2,394	Move to Commissioner District 1, rename to 1148. Lose northwest part and west part to Precinct 2190. Lose east part to create Precinct 1853. Lose north part to create Precinct 3854.	1,427
2537	1,565	Move to Commissioner District 1, rename to 1537. Lose west part to Precinct 1467(former 2467). Lose central part to Precinct 3536(former 2536).	1,563
2655	987	Move to Commissioner District 1, rename to 1655. Lose west part to Precinct 2190. Lose two east parts to Precinct 3857(new).	987
2656	80	Lose east part to create Precinct 1855.	2
2708	1,722	Lose north part to Precinct 1453(former 2453). Gain entirety of Precincts 2618 and 2643.	3,290
3329	2,942	Move to Commissioner District 1, rename to 1329. Gain southeast part of 3336. Lose west part to Precinct 3160. Lose two north parts to Precinct 3389.	2,189
3336	3,347	Lose southeast part to Precinct 1329(former 3329).	3,347
4620	62	Lose north part to Precinct 3325. Lose southwest and south parts to Precinct 3164.	62
2618	49	Absorbed completely into Precinct 2708.	N/A
2643	1,519	Absorbed completely into Precinct 2708.	N/A
1404	2,214	Gain northeast and east parts of Precinct 3388(former 1388).	2,393
2190	318	Gain northwest and west parts of Precinct 1148(former 2148).	1,265
2467	2,281	Move to Commissioner District 1, rename to 1467. Gain west part of Precinct 1537(former 2537).	2,281
2536	1,706	Move to Commissioner District 3, rename to 3536. Gain central part of Precinct 1537(former 2537).	1,708
3160	2,963	Gain west part of Precinct 1329(former 3329).	3,716
3164	2,146	Gain southwest and south parts of 4620.	2,146
3325	1,086	Gain north part of 4620.	1,086

New Precinct	Current (02/03/2025) Registered Voters	Origin	Estimated Future Registered Voters
1853	n/a	Created from east part of 2148(renamed to 1148)	5
3854	n/a	Created from north part of 2148(renamed to 1148)	15
1855	n/a	Created form east part of 2656(renamed to 1656)	78



PRECINCT 1388 ACTIVE VOTERS 3,105

Legend

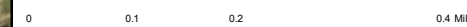
- All Other Precincts
- Affected Voting Precincts
- Proposed 2026 Pct Lines

Clint Ludwig
Elections Administrator
Tarrant County, TX

817-831-VOTE (8683)

2020 Census Population 2,110,640

Not For Reproduction



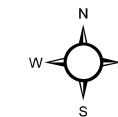
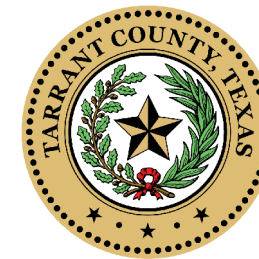
THIS MAP WAS PREPARED BY TARRANT COUNTY ELECTIONS FOR ITS USE, AND MAY BE REVISED AT ANY TIME WITHOUT NOTIFICATION TO ANY USER.

THE TARRANT COUNTY ELECTIONS DOES NOT GUARANTEE THE CORRECTNESS OR ACCURACY OF ANY FEATURES ON THIS MAP. TARRANT COUNTY ASSUMES NO RESPONSIBILITY IN CONNECTIONS THEREWITH.

PRINTED June 05 2025



TC9-1-1 Pictometry



PRECINCT 2148 ACTIVE VOTERS 2,394

Legend

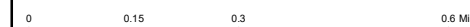
- All Other Precincts
- Affected Voting Precincts
- Proposed 2026 Pct Lines

Clint Ludwig
Elections Administrator
Tarrant County, TX

817-831-VOTE (8683)

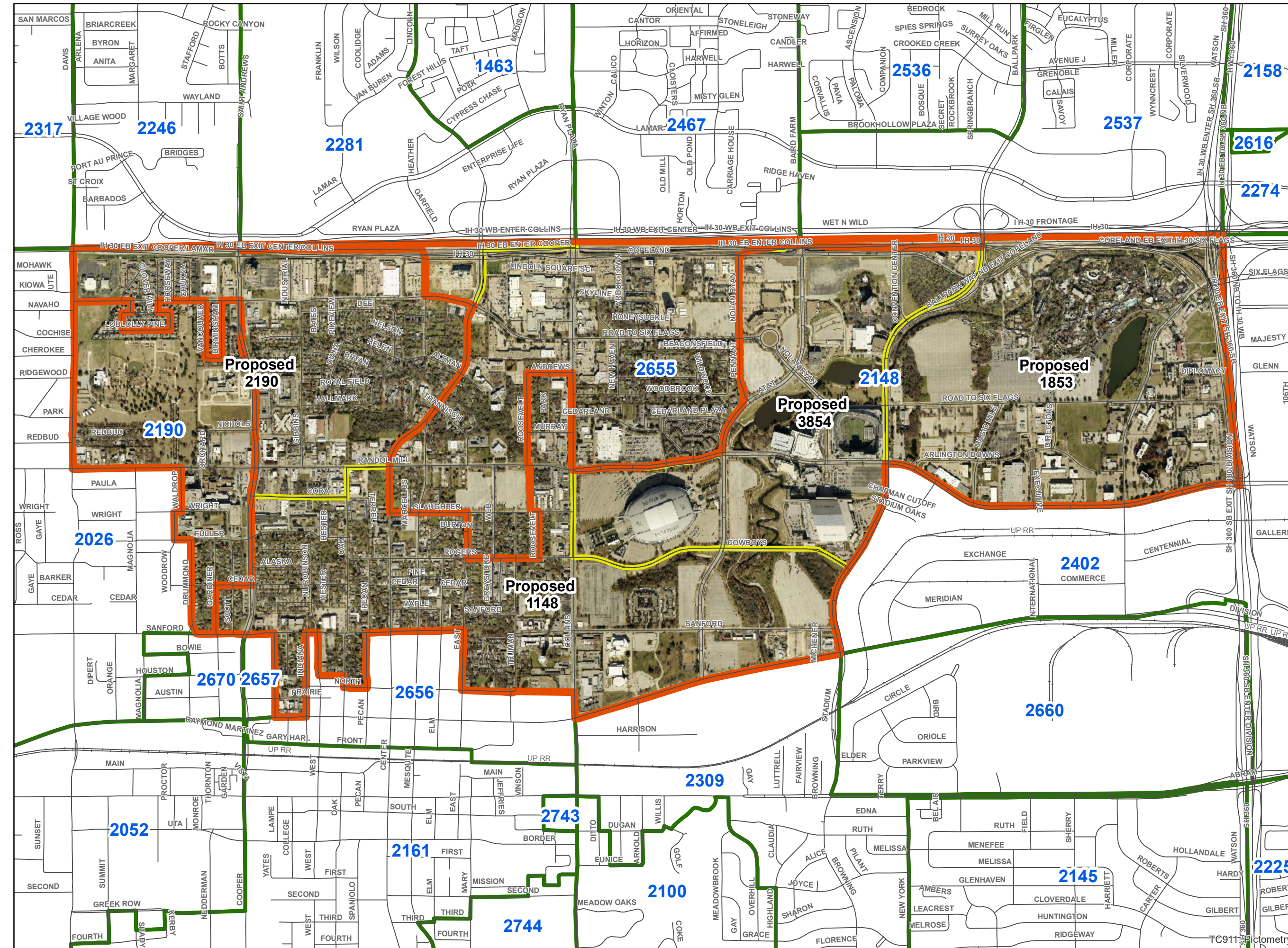
2020 Census Population 2,110,640

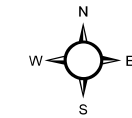
Not For Reproduction



THIS MAP WAS PREPARED BY TARRANT COUNTY ELECTIONS FOR ITS USE, AND MAY BE REVISED AT ANY TIME WITHOUT NOTIFICATION TO ANY USER.

THE TARRANT COUNTY ELECTIONS DOES NOT GUARANTEE THE CORRECTNESS OR ACCURACY OF ANY FEATURES ON THIS MAP. TARRANT COUNTY ASSUMES NO RESPONSIBILITY IN CONNECTIONS THEREWITH.





PRECINCT 2537 ACTIVE VOTERS 1,565

Legend

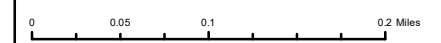
- All Other Precincts
- Affected Voting Precincts
- Proposed 2026 Pct Lines

Clint Ludwig
Elections Administrator
Tarrant County, TX

817-831-VOTE (8683)

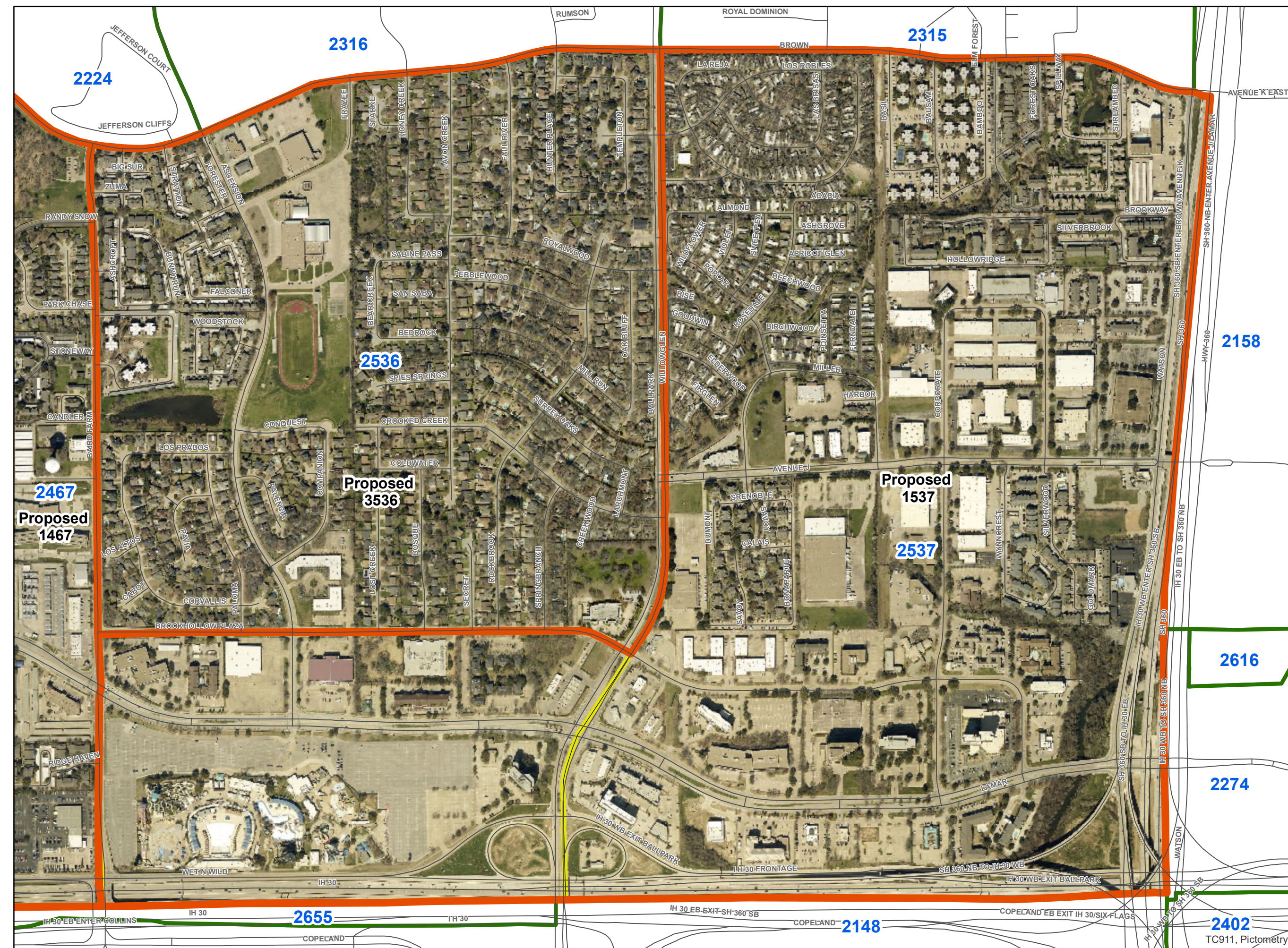
2020 Census Population 2,110,640

Not For Reproduction

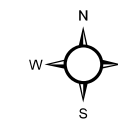
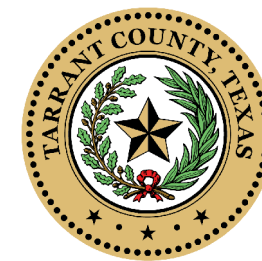


THIS MAP WAS PREPARED BY TARRANT COUNTY ELECTIONS FOR ITS USE, AND MAY BE REVISED AT ANY TIME WITHOUT NOTIFICATION TO ANY USER.

THE TARRANT COUNTY ELECTIONS DOES NOT GUARANTEE THE CORRECTNESS OR ACCURACY OF ANY FEATURES ON THIS MAP. TARRANT COUNTY ASSUMES NO RESPONSIBILITY IN CONNECTIONS THEREWITH.



TC911, Pictometry



PRECINCT 2655 ACTIVE VOTERS 987

Legend

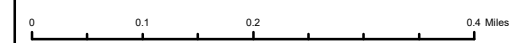
- All Other Precincts
- Affected Voting Precincts
- Proposed 2026 Pct Lines

Clint Ludwig
Elections Administrator
Tarrant County, TX

817-831-VOTE (8683)

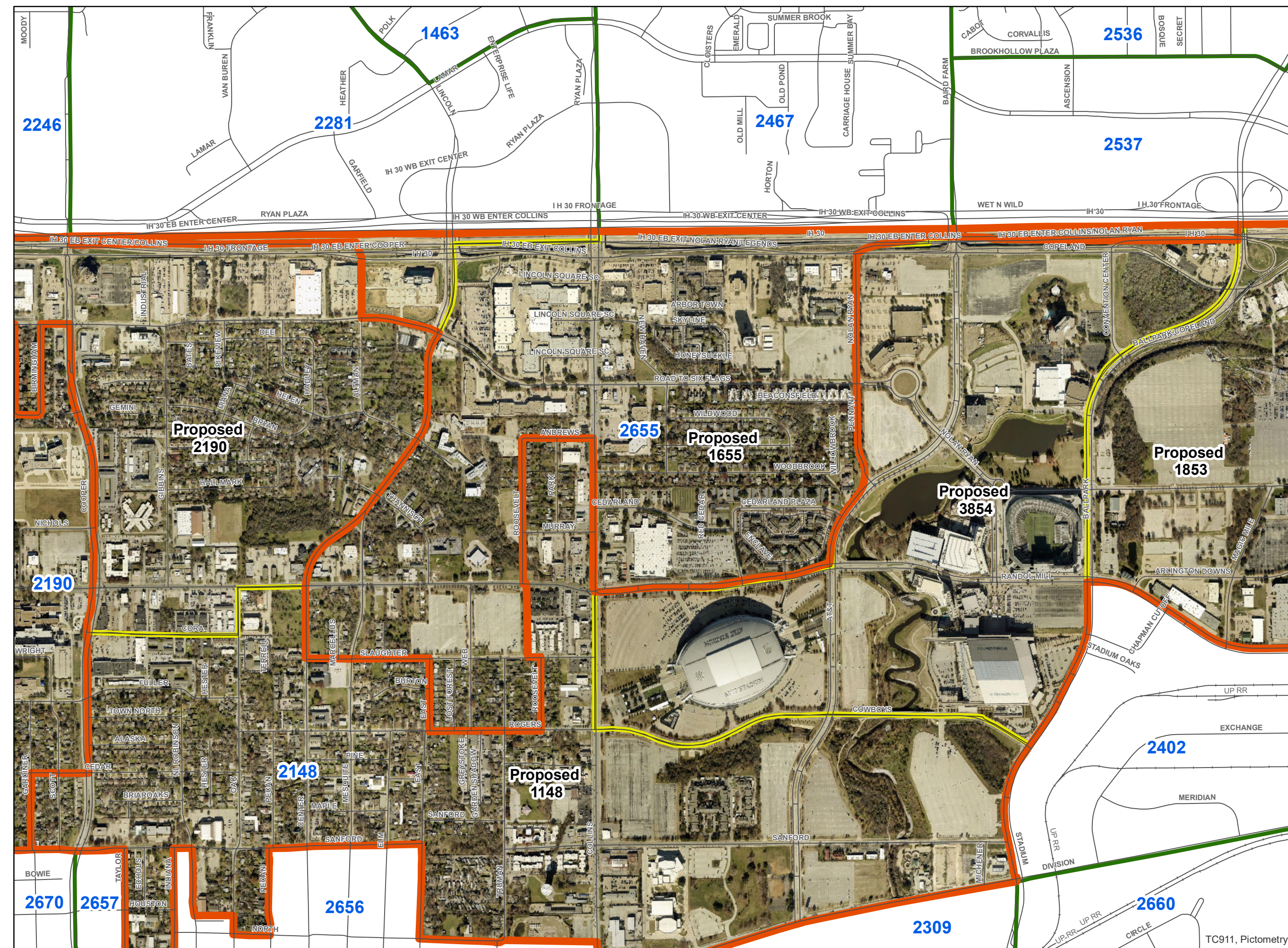
2020 Census Population 2,110,640

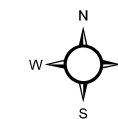
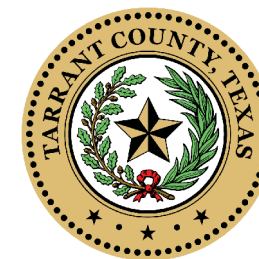
Not For Reproduction



THIS MAP WAS PREPARED BY TARRANT COUNTY ELECTIONS FOR ITS USE, AND MAY BE REVISED AT ANY TIME WITHOUT NOTIFICATION TO ANY USER.




THE TARRANT COUNTY ELECTIONS DOES NOT GUARANTEE THE CORRECTNESS OR ACCURACY OF ANY FEATURES ON THIS MAP. TARRANT COUNTY ASSUMES NO RESPONSIBILITY IN CONNECTIONS THEREWITH.





PRECINCT 2656 ACTIVE VOTERS 80

Legend

-  All Other Precincts
-  Affected Voting Precincts
-  Proposed 2026 Pct Lines

Clint Ludwig
Elections Administrator
Tarrant County, TX

817-831-VOTE (8683)

2020 Census Population 2,110,640

Not For Reproduction

0 0.045 0.09 0.18 Miles

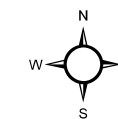
THIS MAP WAS PREPARED BY TARRANT COUNTY ELECTIONS FOR ITS USE, AND MAY BE REVISED AT ANY TIME WITHOUT NOTIFICATION TO ANY USER.

THE TARRANT COUNTY ELECTIONS DOES NOT GUARANTEE THE CORRECTNESS OR ACCURACY OF ANY FEATURES ON THIS MAP. TARRANT COUNTY ASSUMES NO RESPONSIBILITY IN CONNECTIONS THEREWITH.

PRINTED June 05 2025



TC911 DUGAN Pictometry



PRECINCT 2708 ACTIVE VOTERS 1,722

Legend

- All Other Precincts
- Affected Voting Precincts
- Proposed 2026 Pct Lines

Clint Ludwig
Elections Administrator
Tarrant County, TX

817-831-VOTE (8683)

2020 Census Population 2,110,640

Not For Reproduction

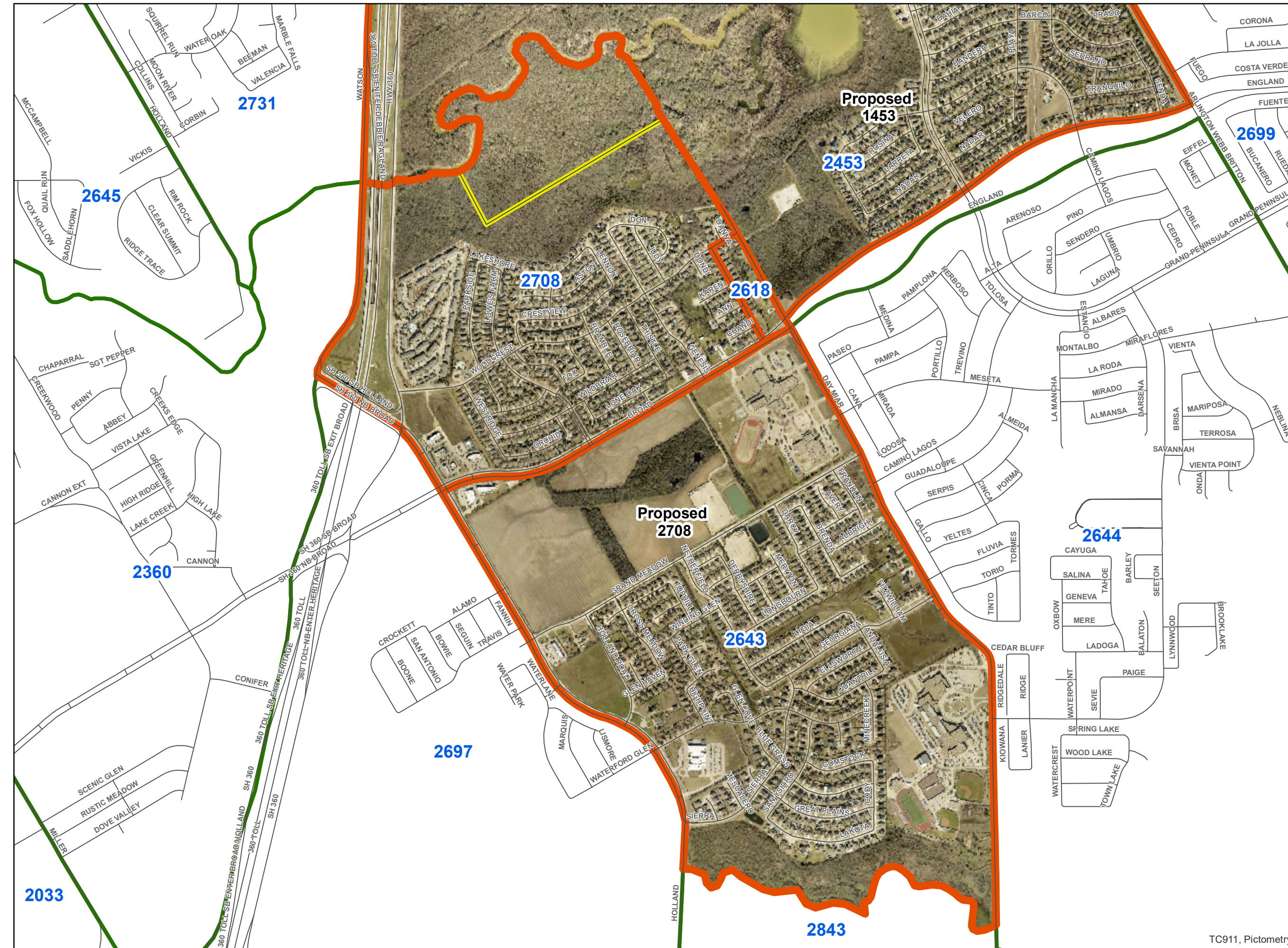
0 0.125 0.25 0.5 Miles

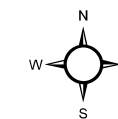
THIS MAP WAS PREPARED BY TARRANT COUNTY ELECTIONS FOR ITS USE, AND MAY BE REVISED AT ANY TIME WITHOUT NOTIFICATION TO ANY USER.

THE TARRANT COUNTY ELECTIONS DOES NOT GUARANTEE THE CORRECTNESS OR ACCURACY OF ANY FEATURES ON THIS MAP. TARRANT COUNTY ASSUMES NO RESPONSIBILITY IN CONNECTIONS THEREWITH.

PRINTED June 05 2025

TC911, Pictometry





PRECINCT 3329 ACTIVE VOTERS 2,942

Legend

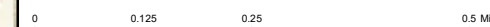
- All Other Precincts
- Affected Voting Precincts
- Proposed 2026 Pct Lines

Clint Ludwig
Elections Administrator
Tarrant County, TX

817-831-VOTE (8683)

2020 Census Population 2,110,640

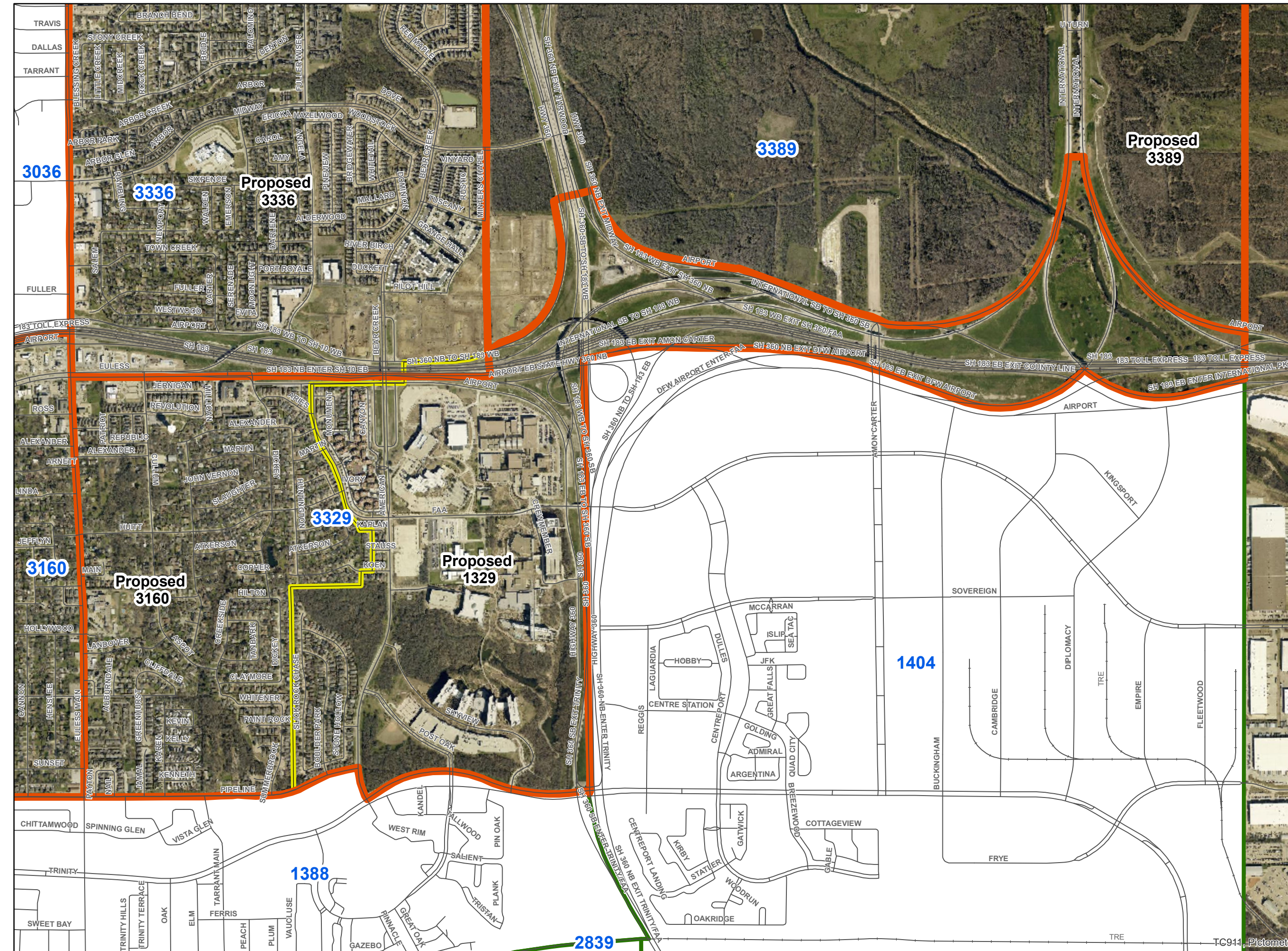
Not For Reproduction



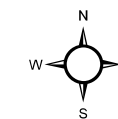
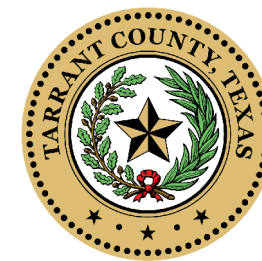
THIS MAP WAS PREPARED BY TARRANT COUNTY ELECTIONS FOR ITS USE, AND MAY BE REVISED AT ANY TIME WITHOUT NOTIFICATION TO ANY USER.

THE TARRANT COUNTY ELECTIONS DOES NOT GUARANTEE THE CORRECTNESS OR ACCURACY OF ANY FEATURES ON THIS MAP. TARRANT COUNTY ASSUMES NO RESPONSIBILITY IN CONNECTIONS THEREWITH.

PRINTED June 05 2025



TC914 Pictometry



PRECINCT 3336 ACTIVE VOTERS 3,347

Legend

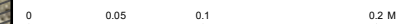
- All Other Precincts
- Affected Voting Precincts
- Proposed 2026 Pct Lines

Clint Ludwig
Elections Administrator
Tarrant County, TX

817-831-VOTE (8683)

2020 Census Population 2,110,640

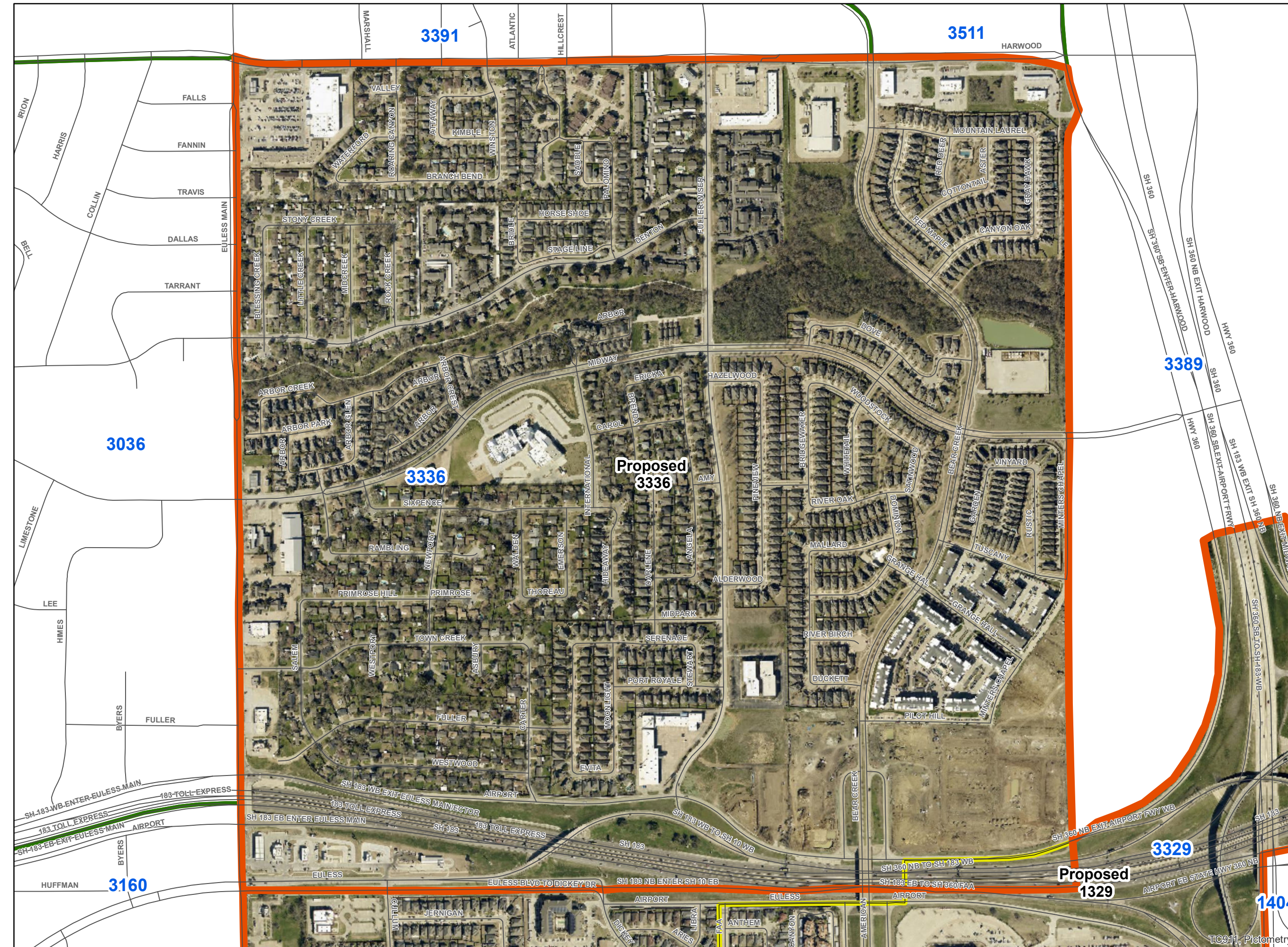
Not For Reproduction



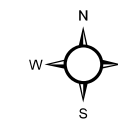
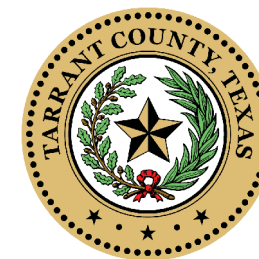
THIS MAP WAS PREPARED BY TARRANT COUNTY ELECTIONS FOR ITS USE, AND MAY BE REVISED AT ANY TIME WITHOUT NOTIFICATION TO ANY USER.

THE TARRANT COUNTY ELECTIONS DOES NOT GUARANTEE THE CORRECTNESS OR ACCURACY OF ANY FEATURES ON THIS MAP. TARRANT COUNTY ASSUMES NO RESPONSIBILITY IN CONNECTIONS THEREWITH.

PRINTED June 05 2025






TC911, Pictometry



PRECINCT 4620 ACTIVE VOTERS 62

Legend

-  All Other Precincts
-  Affected Voting Precincts
-  Proposed 2026 Pct Lines

Clint Ludwig
Elections Administrator
Tarrant County, TX

817-831-VOTE (8683)

2020 Census Population 2,110,640

Not For Reproduction

0 0.03 0.06 0.12 Miles

THIS MAP WAS PREPARED BY TARRANT COUNTY ELECTIONS FOR ITS USE, AND MAY BE REVISED AT ANY TIME WITHOUT NOTIFICATION TO ANY USER.

THE TARRANT COUNTY ELECTIONS DOES NOT GUARANTEE THE CORRECTNESS OR ACCURACY OF ANY FEATURES ON THIS MAP. TARRANT COUNTY ASSUMES NO RESPONSIBILITY IN CONNECTIONS THEREWITH.

PRINTED June 05 2025



TC911, Pictometry

2025 Commissioner Redistricting

Precinct	New District	Proposed Pct Number
2030	1	1030
2031	1	1031
2148	1	1148
2158	1	1158
2180	1	1180
2224	1	1224
2225	1	1225
2274	1	1274
2275	1	1275
2299	1	1299
2302	1	1302
2315	1	1315
2341	1	1341
2349	1	1349
2379	1	1379
2381	1	1381
2383	1	1383
2402	1	1402
2405	1	1405
2411	1	1411
2413	1	1413
2428	1	1428
2438	1	1438
2453	1	1453
2461	1	1461
2462	1	1462
2466	1	1466
2467	1	1467
2484	1	1484
2488	1	1488
2519	1	1519
2525	1	1525
2537	1	1537
2541	1	1541
2546	1	1546
2557	1	1557
2606	1	1606
2613	1	1613
2616	1	1616
2635	1	1635
2644	1	1644
2655	1	1655
2657	1	1657
2699	1	1699
2731	1	1731

2025 Commissioner Redistricting

Precinct	New District	Proposed Pct Number
2838	1	1838
2840	1	1840
3329	1	1329
4006	1	1006
4060	1	1060
4077	1	1077
4096	1	1096
4097	1	1097
4107	1	1107
4195	1	1195
4201	1	1201
4233	1	1233
4256	1	1256
4288	1	1288
4312	1	1312
4432	1	1432
4475	1	1475
4483	1	1483
4495	1	1495
4587	1	1587
1004	2	2004
1009	2	2009
1014	2	2014
1021	2	2021
1022	2	2022
1023	2	2023
1024	2	2024
1034	2	2034
1071	2	2071
1085	2	2085
1103	2	2103
1105	2	2105
1111	2	2111
1133	2	2133
1142	2	2142
1165	2	2165
1167	2	2167
1184	2	2184
1189	2	2189
1206	2	2206
1208	2	2208
1237	2	2237
1241	2	2241
1244	2	2244
1264	2	2264

2025 Commissioner Redistricting

Precinct	New District	Proposed Pct Number
1270	2	2270
1271	2	2271
1273	2	2273
1294	2	2294
1296	2	2296
1337	2	2337
1339	2	2339
1345	2	2345
1348	2	2348
1352	2	2352
1377	2	2377
1423	2	2423
1424	2	2424
1427	2	2427
1431	2	2431
1445	2	2445
1501	2	2501
1504	2	2504
1515	2	2515
1555	2	2555
1627	2	2627
1704	2	2704
1710	2	2710
1717	2	2717
1719	2	2719
1834	2	2834
1837	2	2837
4070	2	2070
4129	2	2129
4135	2	2135
4136	2	2136
4155	2	2155
4179	2	2179
4230	2	2230
4342	2	2342
4456	2	2456
1175	3	3175
1197	3	3197
1199	3	3199
1388	3	3388
1586	3	3586
1701	3	3701
1845	3	3845
2316	3	3316
2442	3	3442

2025 Commissioner Redistricting

Precinct	New District	Proposed Pct Number
2536	3	3536
2839	3	3839
4588	3	3588
1001	4	4001
1015	4	4015
1061	4	4061
1076	4	4076
1081	4	4081
1094	4	4094
1095	4	4095
1108	4	4108
1117	4	4117
1120	4	4120
1298	4	4298
1376	4	4376
1408	4	4408
1416	4	4416
1430	4	4430
1457	4	4457
1472	4	4472
1622	4	4622
1633	4	4633
1676	4	4676
1678	4	4678
1684	4	4684
3043	4	4043
3152	4	4152
3185	4	4185
3192	4	4192
3363	4	4363
3567	4	4567
3570	4	4570
3700	4	4700
3732	4	4732
3841	4	4841
3847	4	4847
3850	4	4850
3841	4	4841
3847	4	4847
3850	4	4850