



COMMISSIONERS COURT
COMMUNICATION

COURT ORDER NUMBER _____

PAGE 1 OF 3

DATE: 1/28/2025

SUBJECT: PUBLIC HEARING - TO CONSIDER ESTABLISHING A SPEED LIMIT OF 35 MPH ON TIMBERVIEW DRIVE - PRECINCT 1

COMMISSIONERS COURT ACTION REQUESTED

It is requested that the Commissioners Court conduct a public hearing to consider establishing a speed limit of 35 MPH on Timberview Drive, Precinct 1.

BACKGROUND

Concerns voiced by the Precinct 1 operations staff regarding potential speeding initiated the need for a site visit and speed study to establish a posted speed limit for Timberview Drive. The County Engineer has completed a speed study and recommends a maximum speed of 35 MPH be posted on Timberview Drive from the Enon Road to Shelby Road. Timberview Drive is established as County Road 1060.

A separate action will be brought to the Court for consideration of approval of the proposed speed limit.

FISCAL IMPACT

There is no fiscal impact associated with this item.

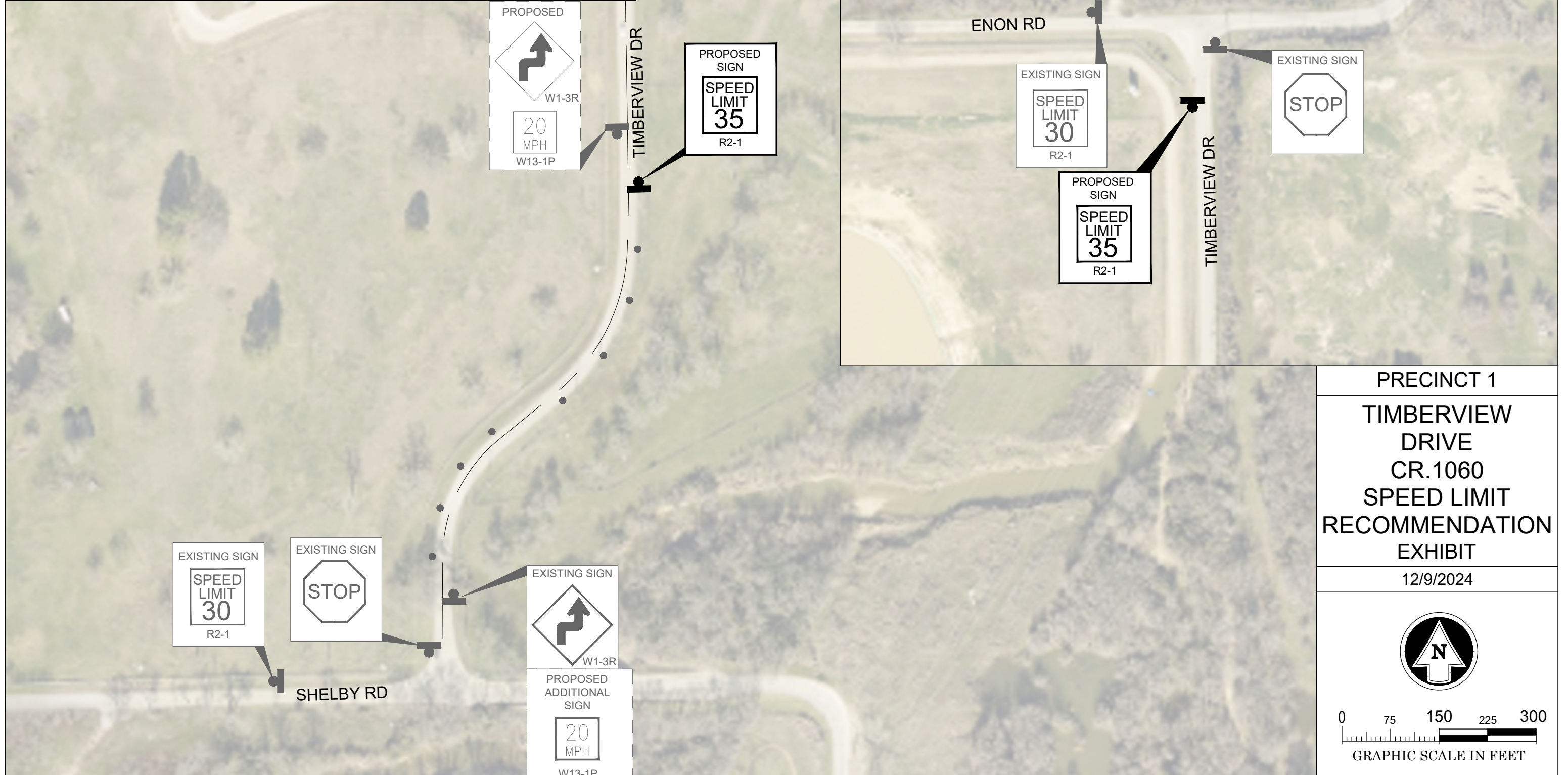
SUBMITTED BY	Transportation Services	PREPARED BY:	Travis Rosenbaum
		APPROVED BY:	Joseph Jackson

TARRANT COUNTY DEPARTMENT OF TRANSPORTATION SERVICES

100 E. Weatherford, Suite 401
Fort Worth, Texas 76196-0601



Phone (817) 884-1250
Fax (817) 884-1178



PRECINCT 1
TIMBERVIEW
DRIVE
CR.1060
SPEED LIMIT
RECOMMENDATION
EXHIBIT

12/9/2024

