



**COMMISSIONERS COURT
COMMUNICATION**

COURT ORDER NUMBER 145321

PAGE 1 OF 11

DATE: 6/3/2025

**SUBJECT: CONSIDERATION OF AN ORDER TO ESTABLISH NEW PRECINCT
BOUNDARIES FOR THE TARRANT COUNTY COMMISSIONERS COURT**

COMMISSIONERS COURT ACTION REQUESTED

It is requested that the Commissioners Court consider an order establishing new precinct boundaries for the Tarrant County Commissioners Court.

BACKGROUND

Pursuant to the Constitution and Laws of the State of Texas, and other laws, the Tarrant County Commissioners Court has the authority to divide Commissioner Precinct Boundaries.

Map options are attached for the Court's consideration.

FISCAL IMPACT

The fiscal impact is unknown at this time.

SUBMITTED BY	Administrator	PREPARED BY: APPROVED BY:	Vanessa Perez Vanessa Perez
--------------	---------------	------------------------------	--------------------------------



**TARRANT COUNTY COMMISSIONERS COURT ORDER ESTABLISHING NEW
COMMISSIONER PRECINCT BOUNDARIES**

On this the ____ day of June 2025, the Commissioners Court of Tarrant County, Texas convened a regularly scheduled meeting with the following members thereof present:

Tim O'Hare, County Judge
Roderick Miles, County Commissioner, Precinct No. 1
Alisa Simmons, County Commissioner, Precinct No. 2
Matt Krause, County Commissioner, Precinct No. 3
Manny Ramirez, County Commissioner, Precinct No. 4

When the following proceedings were had, to wit:

Consideration of an Order to Establish New Precinct Boundaries for the Tarrant County
Commissioners Court

WHEREAS, pursuant to the Constitution and Laws of the State of Texas, and other laws, the Tarrant County Commissioners Court desires to divide the Commissioner Precinct Boundaries; and,

WHEREAS, the Tarrant County Commissioners Court has determined that the interests of the people of the county are best served by changing the existing Commissioner Precinct Boundaries.

NOW, THEREFORE, BE IT ORDERED BY THE COMMISSIONERS COURT OF TARRANT COUNTY, TEXAS, that Commissioners Precincts are hereby composed as depicted on the attached map, affixed hereto as "Exhibit A," labeled "Map Option ____" and fully adopted and incorporated in this Order. It is further ordered by the Court that this Redistricting Order shall take effect immediately.

Upon the Motion of _____ and Seconded by _____
, the above Redistricting Plan passed with _____ votes in favor thereof and _____ votes against.

PASSED AND APPROVED this ____ day of June 2025.

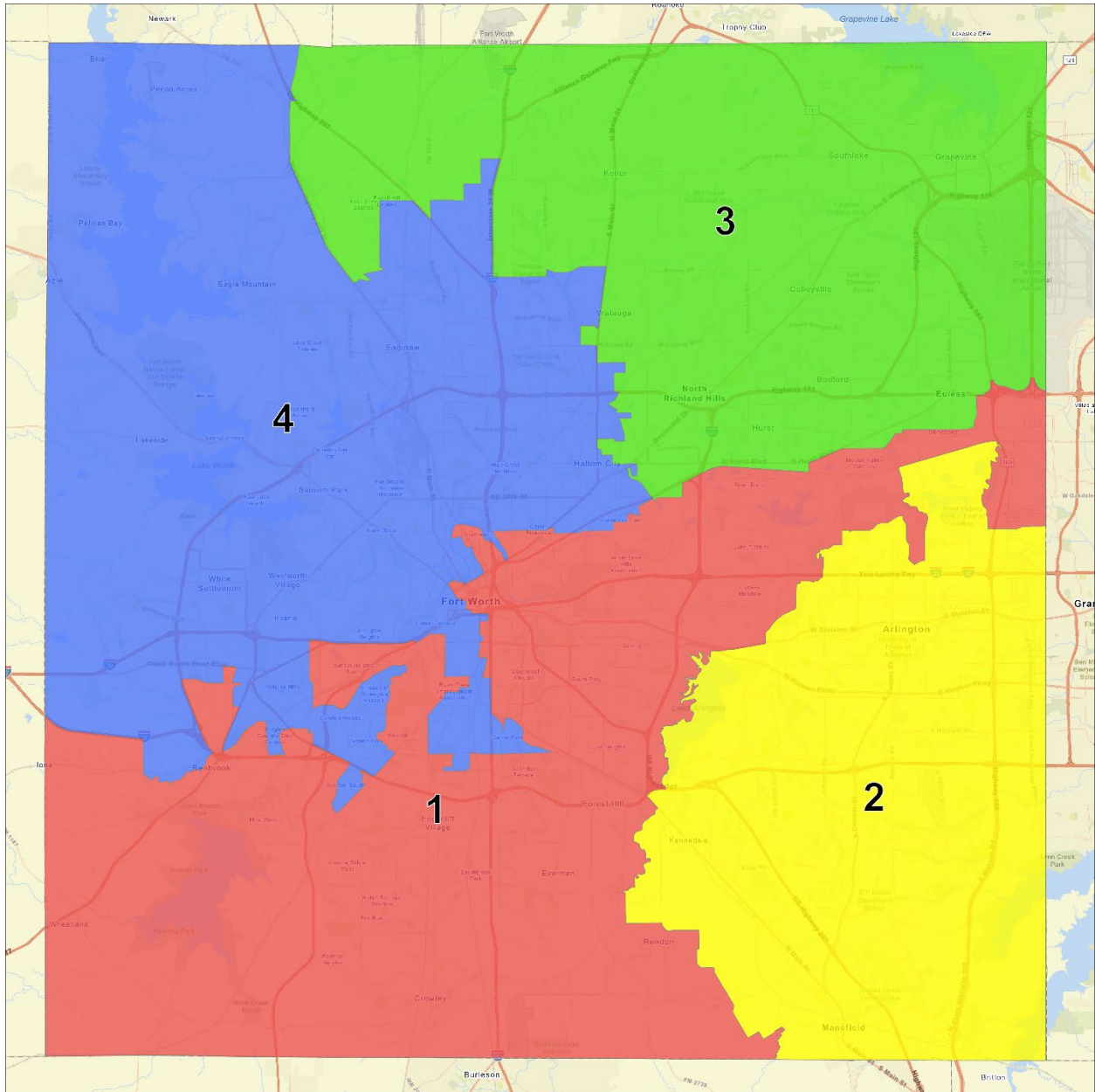
**COUNTY OF TARRANT
STATE OF TEXAS**

Tim O'Hare
County Judge

ATTEST:

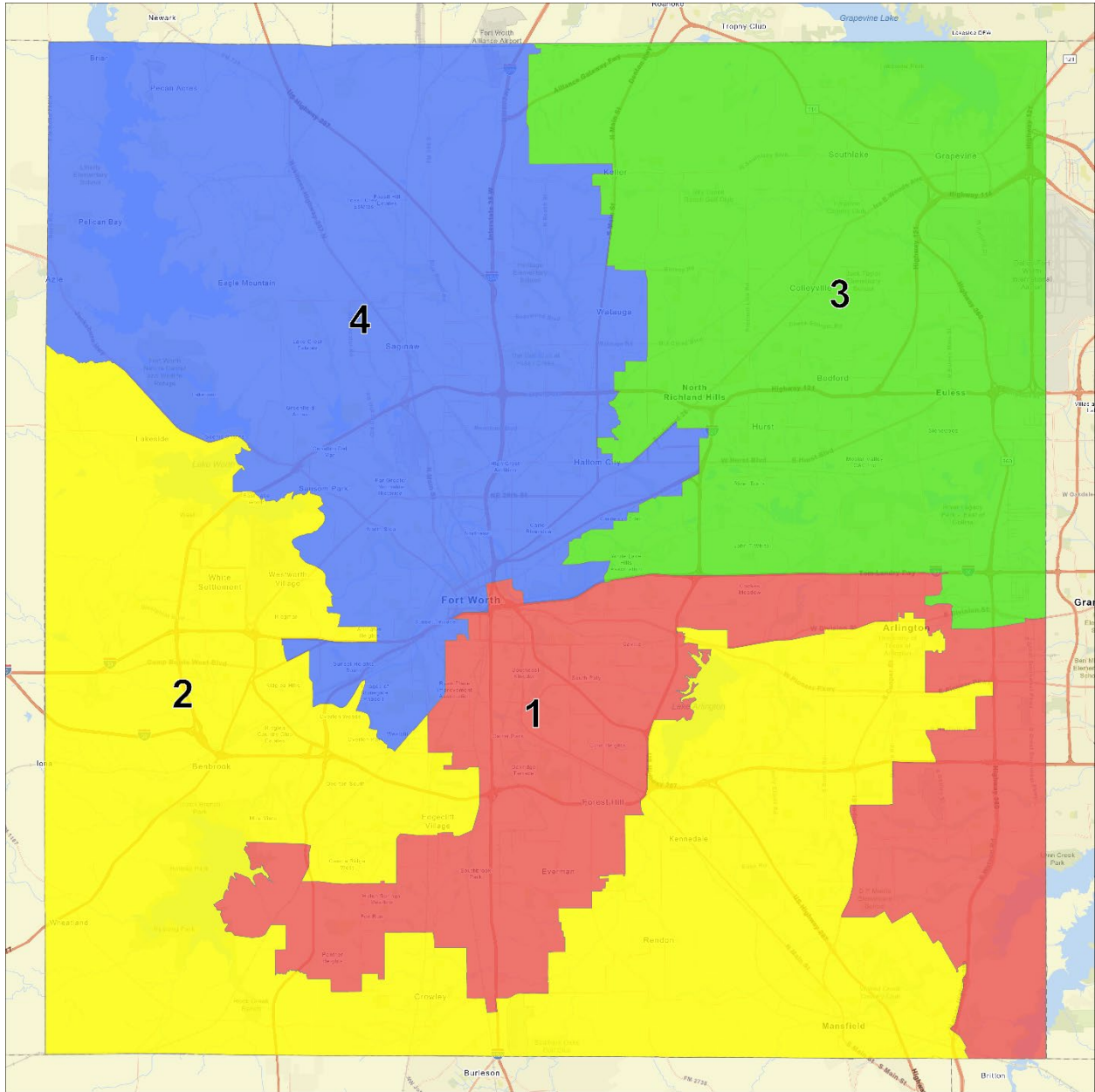
Deputy County Clerk

Current



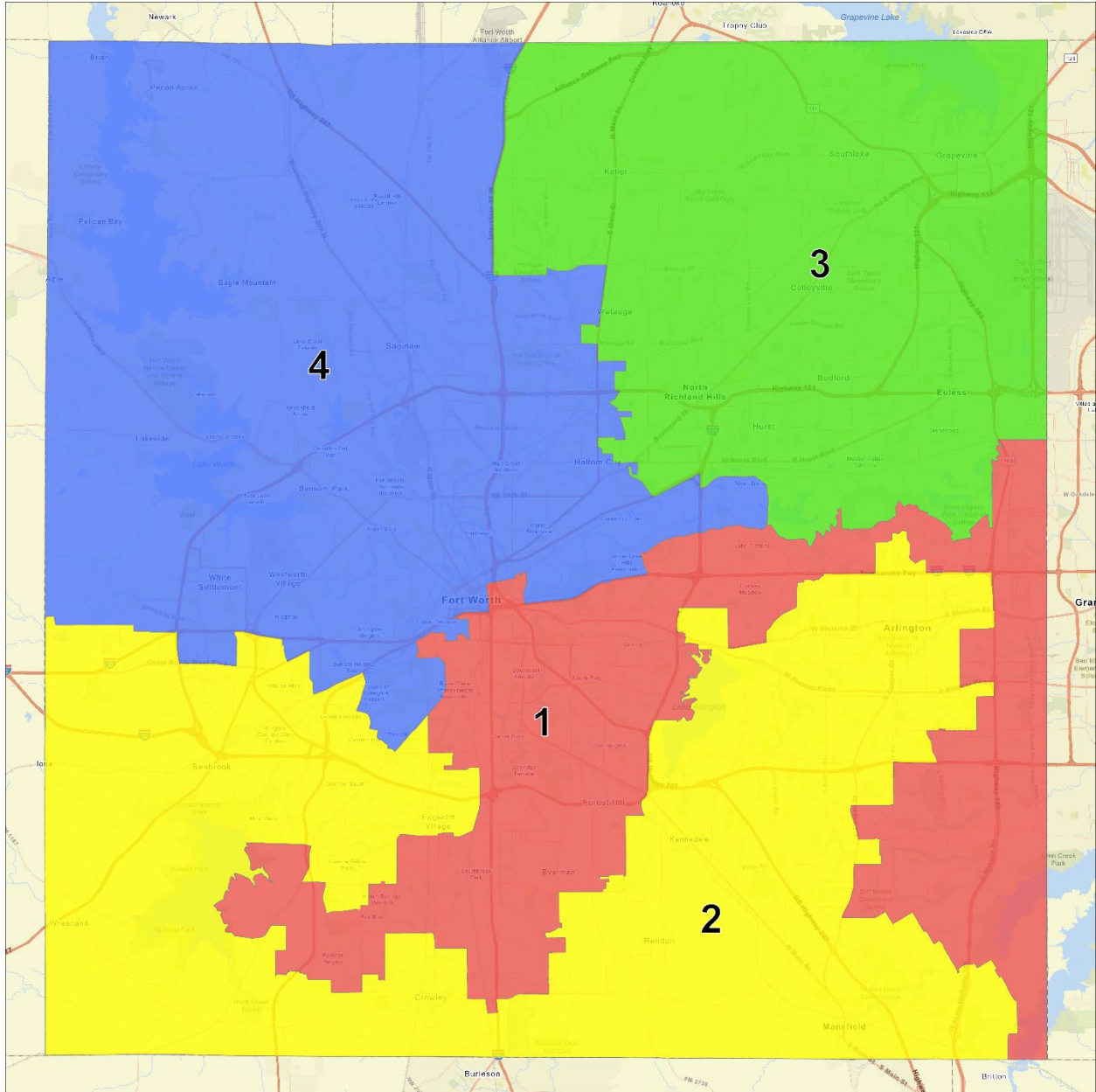
Base	Population		2016		2018				2020				2022		2024				
	Total	Deviation Total %	President		U.S. Senate		Governor		President		U.S. Senate		Governor		President		U.S. Senate		
			R	D	R	D	R	D	R	D	R	D	R	D	R	D	R	D	
1	525,012	(2,648)	-0.50%	37.7%	57.8%	36.6%	62.7%	41.0%	57.3%	37.0%	61.5%	38.8%	58.6%	39.7%	58.9%	41.2%	57.4%	38.1%	59.5%
2	532,325	4,665	0.9%	47.0%	48.1%	44.3%	54.9%	49.7%	48.4%	43.8%	54.8%	45.5%	51.9%	45.5%	53.2%	45.8%	52.5%	42.8%	54.9%
3	521,926	(5,734)	-1.1%	63.1%	31.3%	60.3%	38.8%	65.9%	32.1%	59.1%	39.2%	61.6%	35.8%	61.0%	37.5%	60.6%	37.9%	57.8%	39.9%
4	531,377	3,717	0.7%	55.4%	39.2%	51.9%	47.2%	56.9%	41.3%	63.1%	45.1%	55.0%	42.0%	54.5%	44.0%	56.2%	42.5%	52.4%	44.9%

Option 1



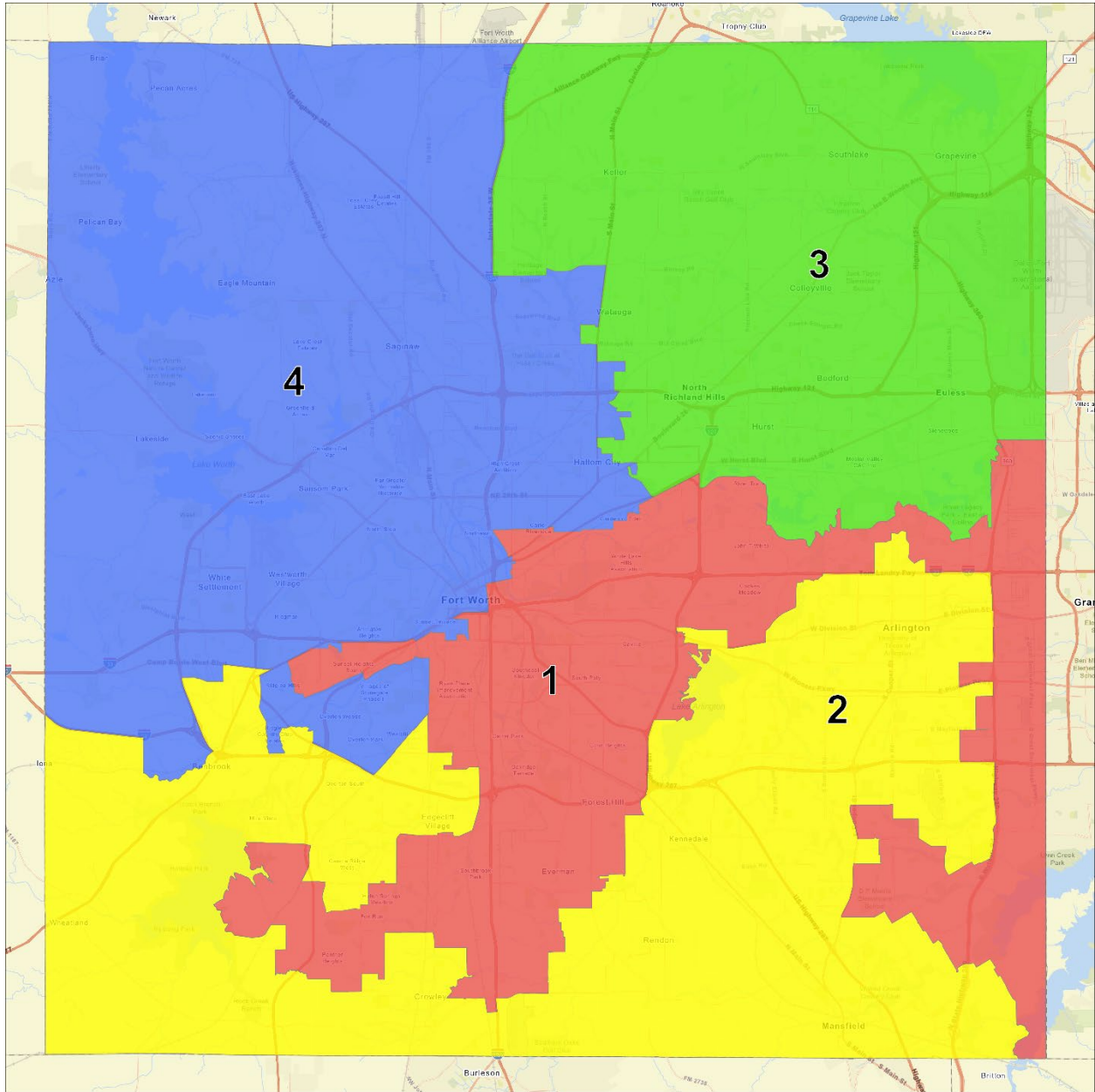
Base Precinct	Population		2016		2018		2020		2022		2024	
	Total	Deviation Total %	President R D	U.S. Senate R D	Governor R D	President R D	U.S. Senate R D	Governor R D	President R D	U.S. Senate R D		
1	527,604	(56) -0.01%	27.6% R 68.7% D	25.9% R 73.4% D	30.3% R 68.0% D	28.0% R 70.7% D	29.1% R 68.1% D	29.2% R 69.7% D	32.8% R 65.7% D	29.4% R 68.2% D		
2	527,734	74 0.01%	56.7% R 37.9% D	54.3% R 44.9% D	59.6% R 38.5% D	53.5% R 44.8% D	55.6% R 41.7% D	55.1% R 43.5% D	54.8% R 43.8% D	51.7% R 45.9% D		
3	527,634	(26) 0.00%	59.4% R 35.1% D	57.0% R 42.2% D	62.7% R 35.4% D	55.3% R 43.0% D	58.0% R 39.5% D	58.0% R 40.6% D	57.1% R 41.3% D	54.5% R 43.2% D		
4	527,668	8 0.00%	56.5% R 38.1% D	52.8% R 46.3% D	57.7% R 40.5% D	54.0% R 44.3% D	55.7% R 41.3% D	55.2% R 43.3% D	57.0% R 41.7% D	53.3% R 44.1% D		

Option 2



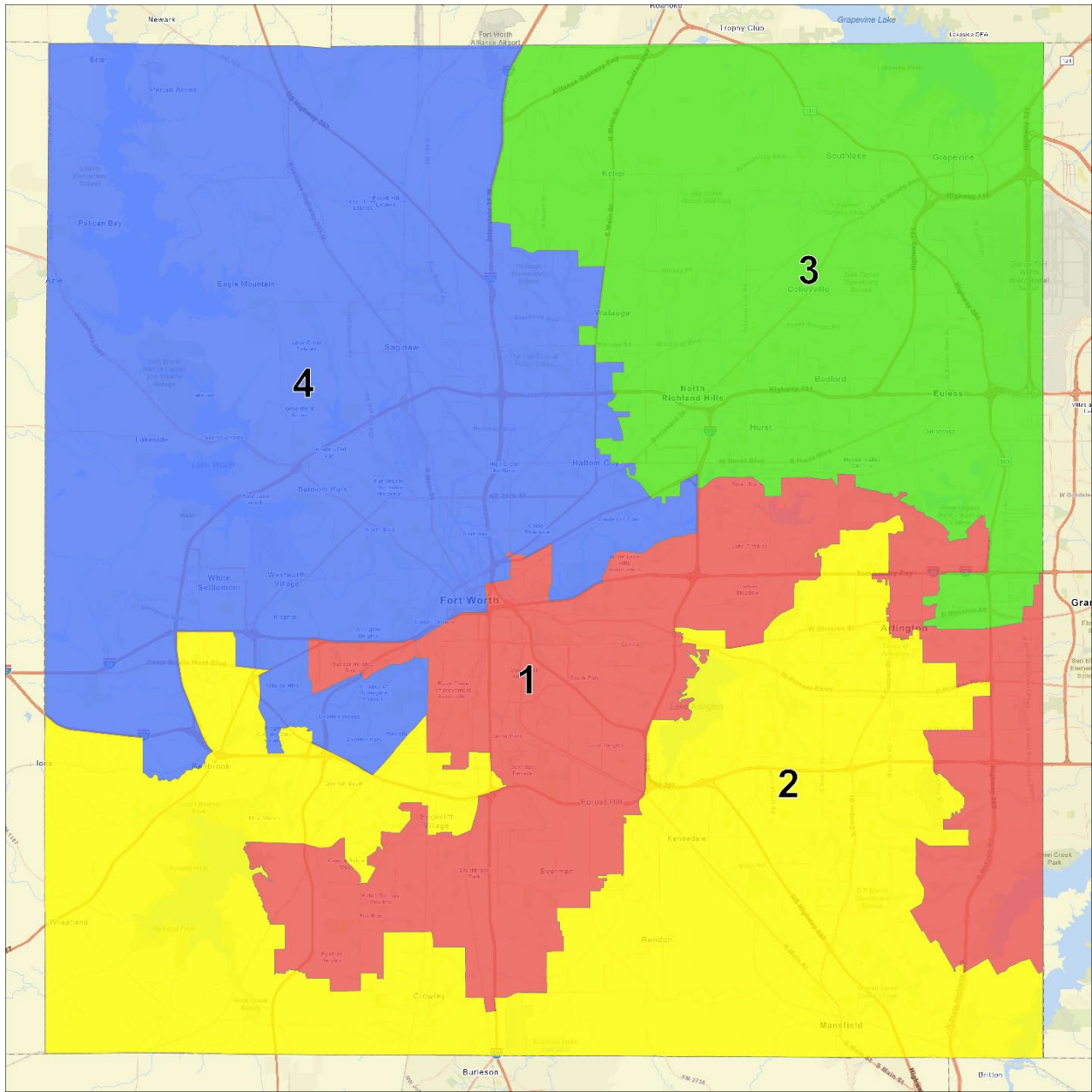
Base	Population		2016		2018				2020				2022				2024			
	Total	Deviation	President		U.S. Senate		Governor		President		U.S. Senate		Governor		President		U.S. Senate			
		Total	%	R	D	R	D	R	D	R	D	R	D	R	D	R	D	R	D	
1	527,652	(8)	-0.002%	26.9%	69.3%	25.4%	74.0%	29.7%	68.6%	27.3%	71.4%	28.5%	68.8%	28.8%	70.1%	32.2%	66.3%	28.9%	68.7%	
2	527,645	(15)	-0.003%	54.8%	39.9%	52.3%	46.8%	57.7%	40.4%	51.3%	47.1%	53.5%	43.9%	53.1%	45.6%	52.6%	45.9%	49.6%	48.0%	
3	527,662	2	0.000%	61.8%	32.6%	59.0%	40.1%	64.7%	33.3%	57.6%	40.7%	60.2%	37.2%	59.7%	38.9%	59.1%	39.3%	56.4%	41.3%	
4	527,681	21	0.004%	56.3%	38.3%	52.9%	46.3%	57.7%	40.5%	54.0%	44.2%	55.7%	41.3%	55.3%	43.2%	57.1%	41.6%	53.3%	44.1%	

Option 3



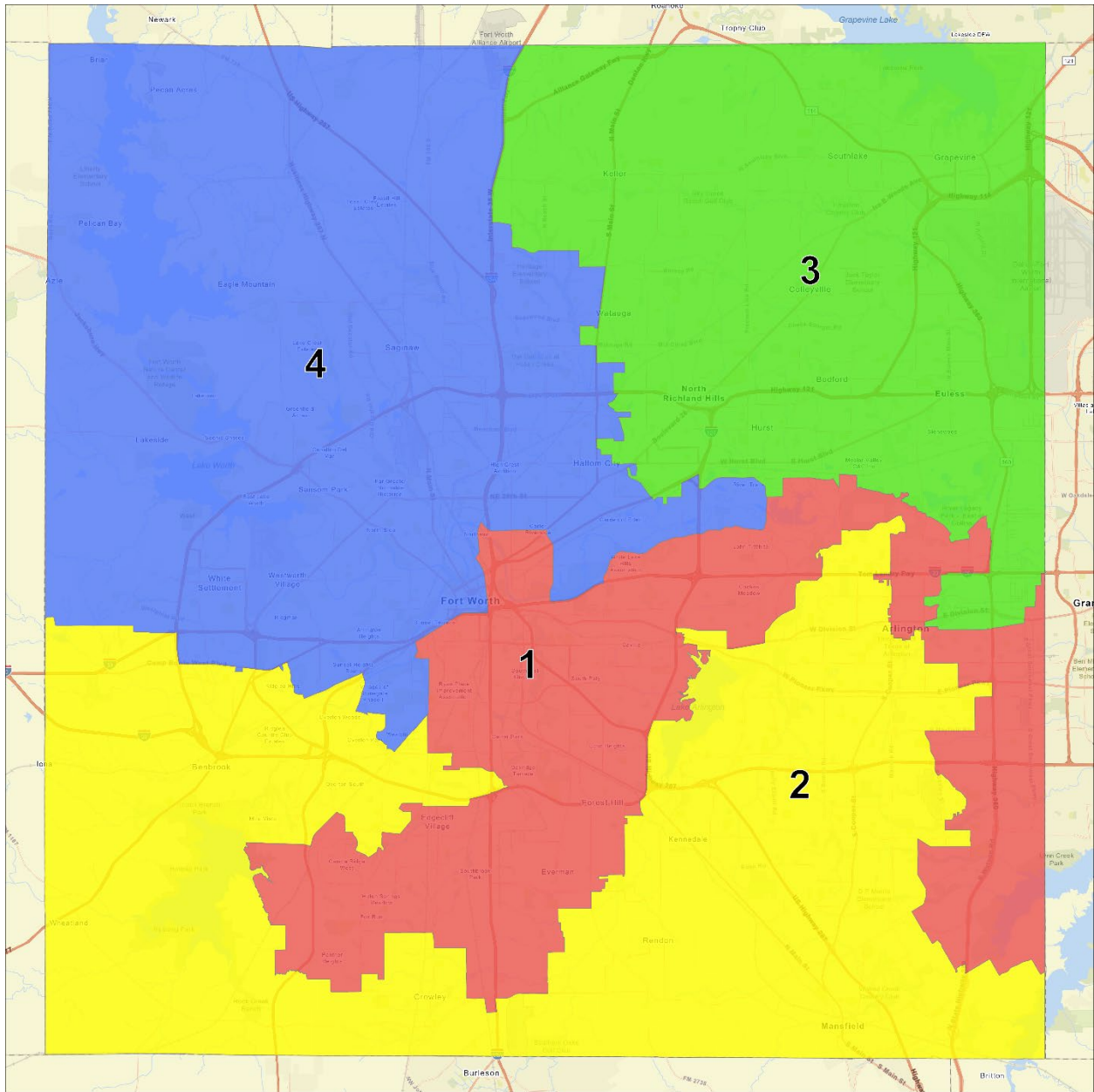
Base Precinct	Population		2016				2018				2020				2022				2024			
	Total	Deviation Total %	President		U.S. Senate		Governor		President		U.S. Senate		Governor		President		U.S. Senate					
			R	D	R	D	R	D	R	D	R	D	R	D	R	D	R	D				
1	527,657	(3) -0.001%	27.4%	68.6%	25.9%	73.4%	30.3%	68.0%	27.6%	71.1%	28.9%	68.4%	29.1%	69.7%	32.4%	66.1%	29.2%	68.4%				
2	527,657	(3) -0.001%	53.5%	41.4%	50.9%	48.2%	56.1%	41.9%	50.2%	48.3%	52.1%	45.3%	51.9%	46.8%	51.6%	46.8%	48.5%	49.1%				
3	527,662	2 0.000%	61.8%	32.6%	59.0%	40.1%	64.7%	33.3%	57.6%	40.7%	60.2%	37.2%	59.7%	38.9%	59.1%	39.3%	56.4%	41.3%				
4	527,664	4 0.001%	57.7%	36.8%	54.4%	44.7%	59.4%	38.8%	55.3%	43.0%	57.2%	39.9%	56.7%	41.8%	58.0%	40.7%	54.4%	43.1%				

Option 4



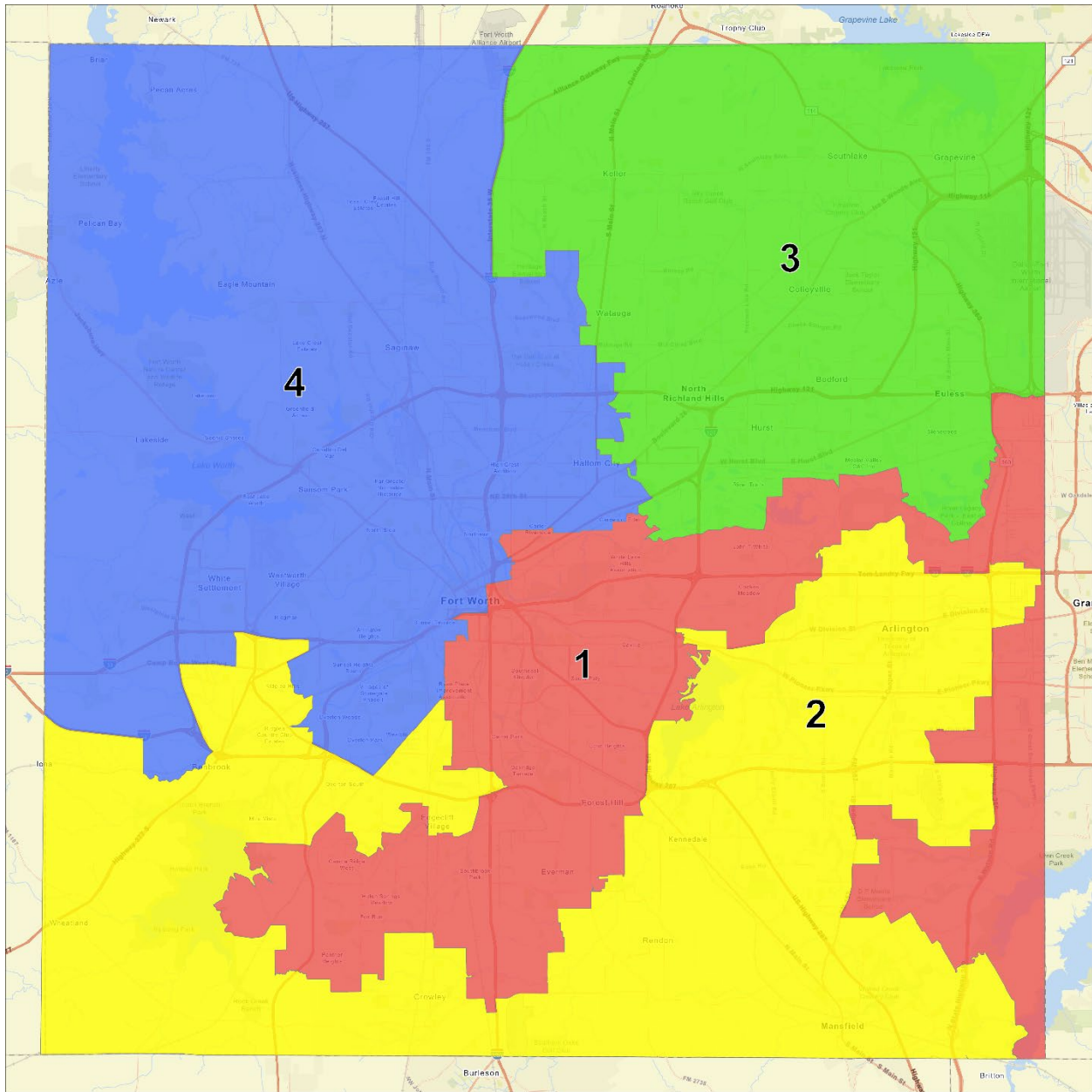
Base Precinct	Population			2016		2018		2020		2022		2024							
	Total	Deviation		President		U.S. Senate		President		U.S. Senate		President		U.S. Senate					
		Total	%	R	D	R	D	R	D	R	D	R	D	R	D				
1	527,660	0	0.00%	26.8%	69.3%	25.4%	73.9%	29.6%	68.6%	27.3%	71.3%	28.6%	68.6%	28.5%	70.2%	32.2%	66.3%	28.9%	66.9%
2	527,660	0	0.00%	53.5%	41.4%	50.8%	48.3%	56.2%	41.9%	50.0%	48.5%	51.9%	45.5%	51.8%	46.9%	51.4%	47.0%	48.4%	49.2%
3	527,660	0	0.00%	61.6%	32.9%	58.9%	40.3%	64.5%	33.5%	57.5%	40.9%	60.1%	37.4%	59.6%	38.9%	59.0%	39.5%	56.3%	41.5%
4	527,660	0	0.00%	57.9%	36.6%	54.5%	44.6%	59.5%	38.7%	55.4%	42.9%	57.3%	39.6%	56.7%	41.8%	58.1%	40.6%	54.4%	43.0%

Option 5



Base Precinct	Population			2016		2018		2020		2022		2024	
	Total	Deviation		President		U.S. Senate		Governor		President		U.S. Senate	
		Total	%	R	D	R	D	R	D	R	D	R	D
1	527,660	0	0.00%	27.0%	69.1%	25.6%	73.7%	29.9%	68.4%	27.4%	71.2%	28.7%	68.5%
2	527,660	0	0.00%	54.3%	40.4%	51.7%	47.4%	57.2%	40.9%	50.8%	47.6%	52.9%	44.5%
3	527,660	0	0.00%	61.6%	32.9%	58.9%	40.3%	64.5%	33.5%	57.5%	40.9%	60.1%	37.4%
4	527,660	0	0.00%	56.7%	38.0%	53.2%	46.0%	58.0%	40.2%	54.3%	44.0%	55.9%	41.1%

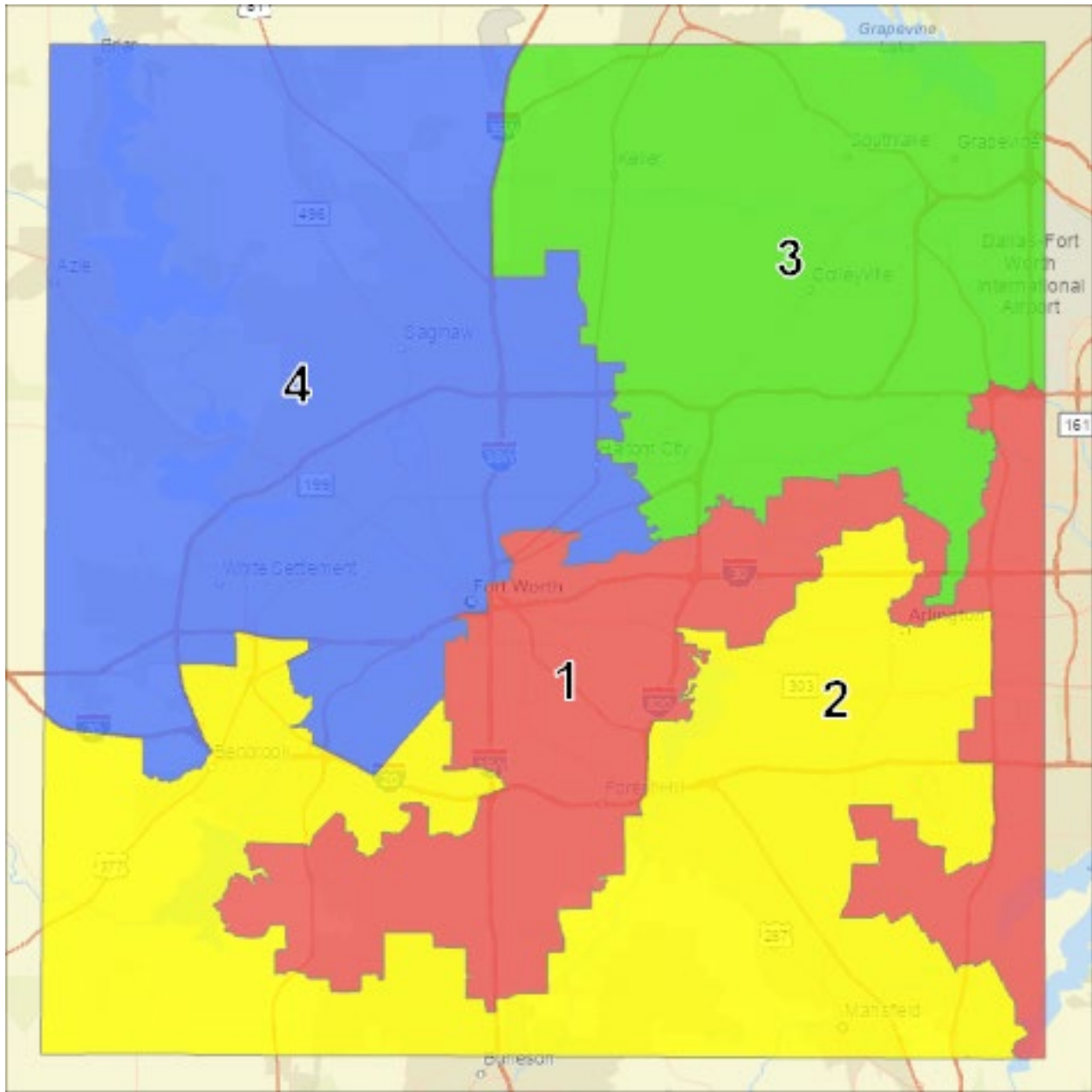
Option 6



5.27.25 Precinct	Population		2016		2018		2020		2022		2024								
	Total	Deviation Total %	President		U.S. Senate		Governor		U.S. Senate		President		U.S. Senate						
			R	D	R	D	R	D	R	D	R	D	R	D					
1	527,659	-1	-0.0002%	26.8%	69.4%	25.3%	74.1%	29.6%	68.8%	27.1%	71.6%	28.2%	69.0%	28.6%	70.2%	32.0%	66.5%	28.8%	68.9%
2	527,649	-11	-0.0021%	54.5%	40.2%	51.9%	47.2%	57.3%	40.8%	51.1%	47.3%	53.1%	44.2%	52.9%	45.8%	52.4%	46.0%	49.4%	48.2%
3	527,623	-37	-0.0070%	61.9%	32.5%	59.1%	40.0%	64.8%	33.2%	57.8%	40.5%	60.4%	37.0%	59.7%	38.8%	59.2%	39.3%	56.5%	41.2%
4	527,709	49	0.0093%	56.8%	37.8%	53.5%	45.7%	58.4%	39.8%	54.5%	43.8%	56.3%	40.7%	55.8%	42.7%	57.5%	41.3%	53.8%	43.7%

5.27.25 Precinct	2020		2022		2024					
	Sheriff		Tax Assessor		County Judge		Sheriff		Tax Assessor	
	R	D	R	D	R	D	R	D	R	D
1	28.5%	71.5%	31.1%	68.9%	29.0%	71.0%	31.5%	68.5%	33.3%	66.7%
2	55.0%	45.0%	57.8%	42.2%	54.6%	45.4%	54.6%	45.4%	56.5%	43.5%
3	62.4%	37.6%	65.2%	34.8%	61.8%	38.2%	62.2%	37.8%	63.9%	36.1%
4	58.1%	41.9%	61.0%	39.0%	57.7%	42.3%	59.2%	40.8%	61.1%	38.9%

Option 7



5.27.25b Precinct	Population			2016		2018		2020				2022		2024					
	Total	Deviation		President		U.S. Senate		Governor		President		U.S. Senate		Governor		President		U.S. Senate	
		Total	%	R	D	R	D	R	D	R	D	R	D	R	D	R	D	R	D
1	527,659	-1	-0.0002%	26.6%	69.5%	25.2%	74.2%	29.4%	69.0%	26.9%	71.7%	28.1%	69.1%	28.5%	70.3%	31.9%	66.6%	28.7%	69.0%
2	527,660	0	0.0000%	54.4%	40.3%	51.8%	47.3%	57.2%	40.9%	51.1%	47.3%	53.1%	44.3%	52.8%	45.9%	52.4%	46.1%	49.3%	48.3%
3	527,660	0	0.0000%	61.9%	32.6%	59.1%	40.1%	64.8%	33.3%	57.7%	40.6%	60.3%	37.1%	59.7%	38.8%	59.2%	39.3%	56.4%	41.3%
4	527,661	1	0.0002%	56.8%	37.8%	53.5%	45.7%	58.4%	39.8%	54.5%	43.8%	56.3%	40.7%	55.8%	42.7%	57.5%	41.3%	53.8%	43.7%

5.27.25b Precinct	2020				2022		2024			
	Sheriff		Tax Assessor		County Judge		Sheriff		Tax Assessor	
	R	D	R	D	R	D	R	D	R	D
1	28.4%	71.6%	31.0%	69.0%	28.9%	71.1%	31.4%	68.6%	33.2%	66.8%
2	54.9%	45.1%	57.7%	42.3%	54.5%	45.5%	54.5%	45.5%	56.4%	43.6%
3	62.4%	37.6%	65.2%	34.8%	61.7%	38.3%	62.2%	37.8%	63.9%	36.1%
4	58.1%	41.9%	61.0%	39.0%	57.7%	42.3%	59.2%	40.8%	61.1%	38.9%



**COMMISSIONERS COURT
COMMUNICATION**

COURT ORDER NUMBER 145323
PAGE 1 OF 11
DATE: 6/3/2025

**SUBJECT: CONSIDERATION OF AN ORDER TO ESTABLISH NEW PRECINCT
BOUNDARIES FOR THE TARRANT COUNTY COMMISSIONERS
COURT**

COMMISSIONERS COURT ACTION REQUESTED

It is requested that the Commissioners Court consider an order establishing new precinct boundaries for the Tarrant County Commissioners Court.

BACKGROUND

Pursuant to the Constitution and Laws of the State of Texas, and other laws, the Tarrant County Commissioners Court has the authority to divide Commissioner Precinct Boundaries.

Map options are attached for the Court's consideration.

FISCAL IMPACT

The fiscal impact is unknown at this time.

SUBMITTED BY	Administrator	PREPARED BY:	Vanessa Perez
		APPROVED BY:	Vanessa Perez



**TARRANT COUNTY COMMISSIONERS COURT ORDER ESTABLISHING NEW
COMMISSIONER PRECINCT BOUNDARIES**

On this the 3rd day of June 2025, the Commissioners Court of Tarrant County, Texas convened a regularly scheduled meeting with the following members thereof present:

Tim O'Hare, County Judge
Roderick Miles, County Commissioner, Precinct No. 1
Alisa Simmons, County Commissioner, Precinct No. 2
Matt Krause, County Commissioner, Precinct No. 3
Manny Ramirez, County Commissioner, Precinct No. 4

When the following proceedings were had, to wit:

Consideration of an Order to Establish New Precinct Boundaries for the Tarrant County Commissioners Court
--

WHEREAS, pursuant to the Constitution and Laws of the State of Texas, and other laws, the Tarrant County Commissioners Court desires to divide the Commissioner Precinct Boundaries; and,

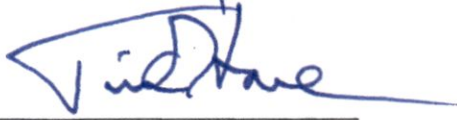
WHEREAS, the Tarrant County Commissioners Court has determined that the interests of the people of the county are best served by changing the existing Commissioner Precinct Boundaries.

NOW, THEREFORE, BE IT ORDERED BY THE COMMISSIONERS COURT OF TARRANT COUNTY, TEXAS, that Commissioners Precincts are hereby composed as depicted on the attached map, affixed hereto as "Exhibit A," labeled "Map Option 1" and fully adopted and incorporated in this Order. It is further ordered by the Court that this Redistricting Order shall take effect immediately.

Upon the Motion of Commissioner Krause and Seconded by Commissioner Ramirez, the above Redistricting Plan passed with 3 votes in favor thereof and 2 votes against.

PASSED AND APPROVED this 3rd day of June 2025.

**COUNTY OF TARRANT
STATE OF TEXAS**

A handwritten signature in blue ink, appearing to read "Tim O'Hare", written over a horizontal line.

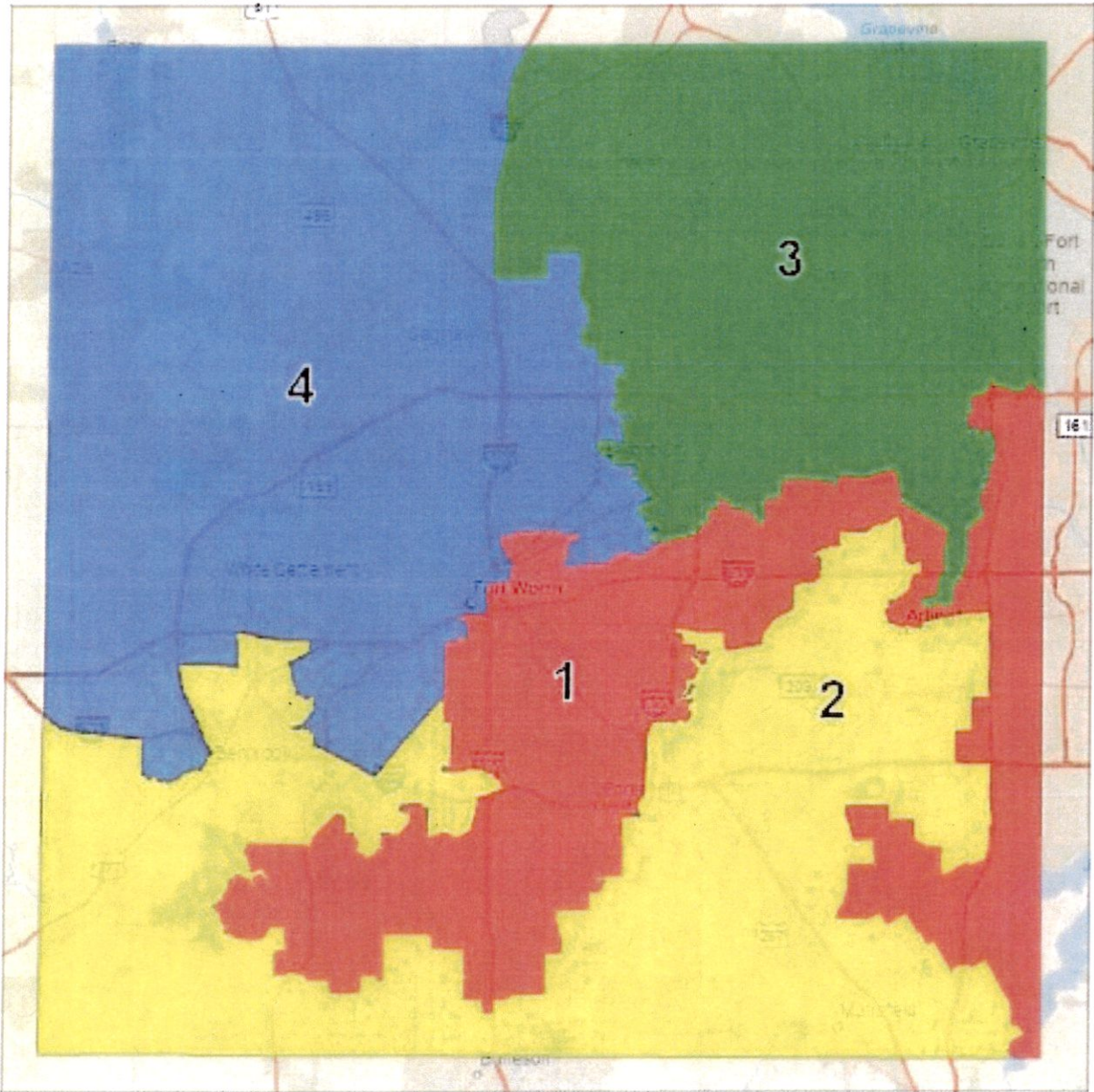
Tim O'Hare
County Judge

ATTEST:

A handwritten signature in blue ink, consisting of a stylized, circular mark with a horizontal line through it.

Deputy County Clerk

Option 7



5.27.25b		Population		2016		2018		2020		2022		2024	
Precinct	Total	Total	Deviation %	President		U.S. Senate		Governor		President		U.S. Senate	
				R	D	R	D	R	D	R	D	R	D
1	527,659	-1	-0.0002%	26.6%	69.5%	25.2%	74.2%	29.4%	69.0%	25.9%	71.7%	28.1%	69.1%
2	527,660	0	0.0000%	54.4%	40.3%	51.8%	47.9%	57.2%	40.9%	51.1%	47.3%	53.1%	44.3%
3	527,660	0	0.0000%	61.9%	37.6%	59.1%	40.1%	64.8%	33.3%	57.7%	40.6%	60.3%	37.1%
4	527,661	1	0.0002%	56.8%	37.8%	53.5%	45.7%	58.4%	39.6%	54.5%	43.8%	50.3%	40.7%

5.27.25b		2020		2022		2024					
Precinct	Total	Sheriff		Tax Assessor		County Judge		Sheriff		Tax Assessor	
		R	D	R	D	R	D	R	D	R	D
1	527,659	28.4%	71.6%	31.0%	69.0%	28.9%	71.1%	31.4%	68.6%	33.2%	66.8%
2	527,660	54.9%	45.1%	57.7%	42.3%	54.5%	45.5%	54.5%	45.5%	56.4%	43.6%
3	527,660	62.4%	37.6%	65.2%	34.8%	61.7%	38.3%	62.2%	37.8%	63.9%	36.1%
4	527,661	58.1%	41.9%	61.0%	39.0%	57.7%	42.3%	59.2%	40.8%	61.1%	38.9%