



**COMMISSIONERS COURT
COMMUNICATION**

COURT ORDER NUMBER 145205

PAGE 1 OF 4

DATE: 5/20/2025

**SUBJECT: REQUEST FOR PUBLIC HEARING - TUESDAY, JUNE 3, 2025, 10:00 A.M. -
TO CONSIDER ESTABLISHING A SPEED LIMIT IN THE DEER WOOD
FOREST SUBDIVISION - PRECINCT 1**

***** CONSENT AGENDA *****

COMMISSIONERS COURT ACTION REQUESTED

It is requested that the Commissioners Court conduct a public hearing on Tuesday, June 3, 2025, at 10:00 a.m., to consider establishing a speed limit in the Deer Wood Forest subdivision, located in Precinct 1.

BACKGROUND

Citizen complaints regarding potential speeding initiated the need for a site visit and speed study to establish a posted speed limit within the Deer Wood Forest Subdivision. The County Engineer has completed a speed study and recommends a maximum speed limit of 30 MPH be posted.

The County Engineer's office has received a letter from the Deerwood Forest Owner's Association signed by the Board of Directors requesting a maximum speed limit of 25 MPH be set for the neighborhood.

County roads located within the subdivision include Deerwood Forest Drive (CR.1292-010), Leaping Buck Point (CR.1292-020), Drop Tine Drive (CR.1292-030), and Drop Tine Court (CR.1292-040).

FISCAL IMPACT

There is no fiscal impact associated with this request for a public hearing.

SUBMITTED BY	Transportation Services	PREPARED BY:	Sarah VanTassel
		APPROVED BY:	Scott Hall

Deerwood Forest Owner's Association, Inc.

November 19, 2024

Mr. Travis Rosenbaum
Deputy County Engineer
Tarrant County Transportation Services
100 E Weatherford St, Suite 401
Fort Worth, Texas 76196

Dear Mr. Rosenbaum,

Thank you for providing the results of the speed study conducted in October 2023 and discussing the findings with us earlier this year.

After discussing different options, our Board of Directors would like to respectfully request the County consider setting the speed limit in Deerwood Forest at 25 mph.

We base this request on the following safety concerns:

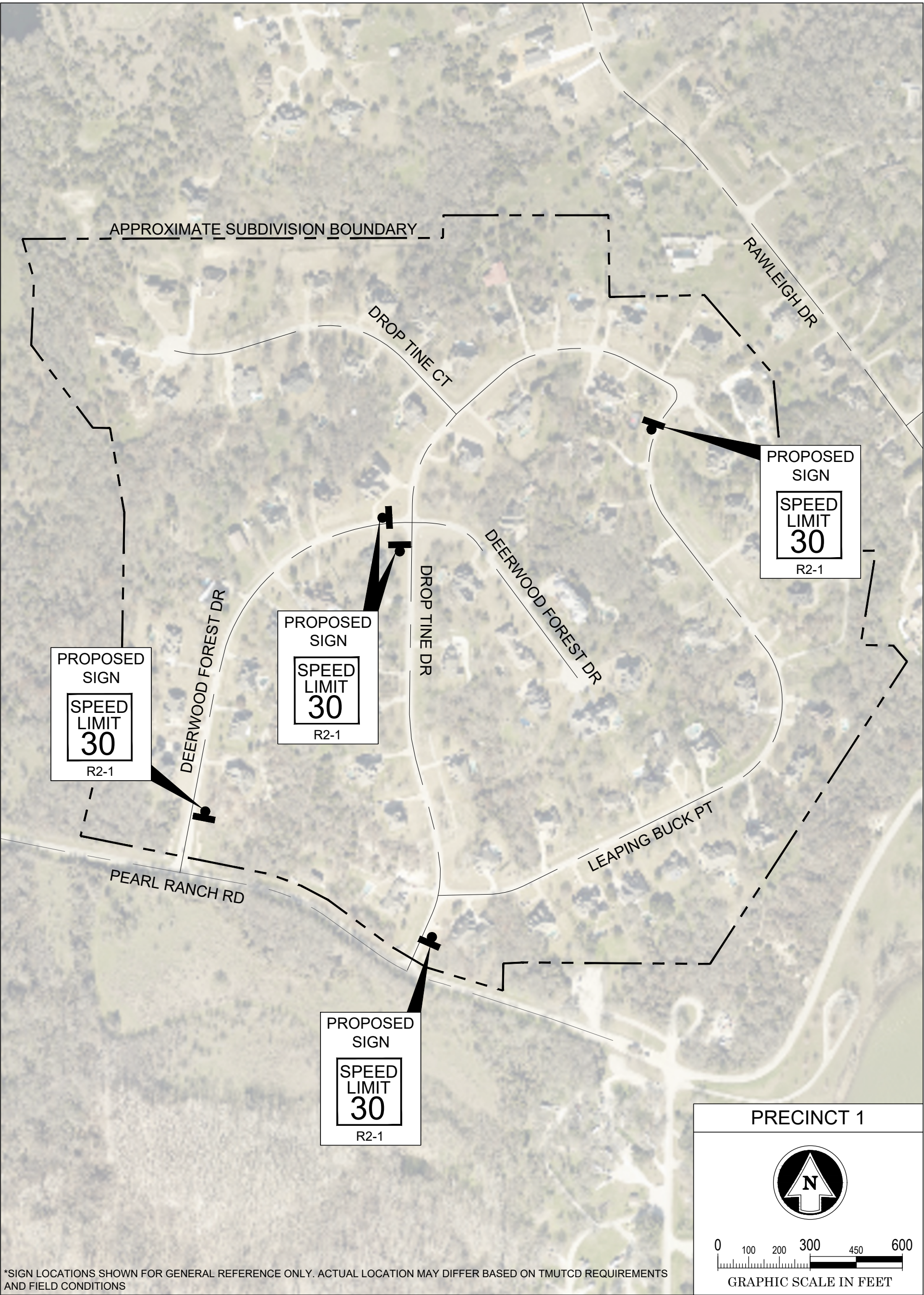
- All of our streets have portions with steep grades
- Multiple points have limited visibility of oncoming traffic
- Our streets are frequently used by cyclists and walkers; we have no sidewalks and very little extra road space for them to occupy when cars pass

Thank you for your time and consideration. Please let us know when we can expect this matter to go before the Commissioners Court.

Sincerely,
Deerwood Forest Owner's Association
Board of Directors

Ken Dice
Tyler Garcia
Scott Kudlaty
John Shults
Steve Watts

T:\Projects\Engineering\Signage\Signage\DeerwoodForest\DeerwoodForest-Speed.dwg



*SIGN LOCATIONS SHOWN FOR GENERAL REFERENCE ONLY. ACTUAL LOCATION MAY DIFFER BASED ON TMUTCD REQUIREMENTS AND FIELD CONDITIONS

PRECINCT 1

GRAPHIC SCALE IN FEET

4/29/2025

TARRANT COUNTY DEPARTMENT OF TRANSPORTATION SERVICES

200 Taylor St., Suite 305
Fort Worth, Texas 76196



Phone (817) 884-1250
Fax (817) 884-1178

DEER WOOD FOREST SUBDIVISION SPEED LIMIT RECOMMENDATION EXHIBIT

